

BURUNDI

Expanding Hope



Healthbridge
GLOBAL



ABOUT BURUNDI

Nestled in the heart of East Africa, Burundi is a small, landlocked nation shaped by rolling highlands and fertile soil. Its temperate climate supports a largely agrarian population, and most families survive by farming small plots of family-owned land. Coffee and banana trees dominate the landscape, though much of the coffee and tea produced in Burundi is sold at wholesale prices, limiting local economic benefit.

Burundi is one of the few African nations that once existed as an independent kingdom united by a shared culture and language. This continuity was disrupted by colonial rule under Germany and later Belgium, in the nineteenth and twentieth centuries. Independence in 1962 brought short-lived hope, as subsequent decades were marked by political instability, civil war, and deep economic hardship. As a result, Burundi remains among the poorest countries in the world.

Much like its northern neighbor, Rwanda, ethnic conflict fueled by colonial divisions erupted between the Hutu and Tutsi tribal groups. Recurring violence eventually claimed more than 400,000 lives, producing lasting trauma and weakened social trust. Despite these challenges, Burundians continue to move forward with quiet resilience. Daily life reflects strong communal bonds, expressed through shared labor, hospitality, and mutual care. This enduring solidarity remains one of Burundi's greatest strengths.

A Young Nation

More than 65% of Burundi's population is under the age of 25.

Language and Culture

Kirundi is the national language, while French and Swahili are widely spoken.

Enduring Traditions

The Burundian drum, or "ingoma", is a national symbol recognized by UNESCO as an Intangible Cultural Heritage Asset.



SCARCE ACCESS TO CARE

Much of Burundi's rural population is still living day to day on small-scale subsistence farming. This rural lifestyle, combined with a severe lack of healthcare infrastructure, means that most Burundians must travel long distances to see a doctor, or simply go without. Our partner, Kibuye Hope Hospital, is strategically placed in the center of the nation, 3 hours from the largest city. It is uniquely positioned to serve a broad region of the country, in addition to many neighboring nations. Patients often travel to Kibuye from as far as the DRC (The Democratic Republic of the Congo) and Tanzania to receive medical care. The Hospital is a critical lifeline in a nation that lacks the infrastructure to support smaller local clinics.

The medical care at Kibuye is motivated by the love of Christ and expressed through active compassion in all that they do.

Being the region's only fully equipped hospital often leads to an overwhelming demand for services. This is especially true in the critical areas of triage and outpatient services. Each week, Kibuye welcomes over 700 patients, performs dozens of surgeries, and delivers scores of babies. And it all starts once patients pass through the gates of the hospital.





Missional Healthcare Workers

DR. GILBERT KIBINAKANWA

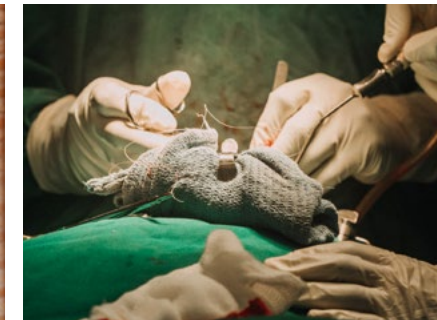
CEO, Director of Kibuye Hope Hospital

Rev. Dr. Gilbert Kibinakanwa was born in a rural village in Burundi. He lost his father at the age of five and was raised by a single mother. He began school later than most children, yet quickly demonstrated strong academic abilities. His early dream was to study medicine, but limited access to education led him instead into the profession of teaching. He served in rural schools for years, eventually becoming a principal.

Alongside his work in education, his faith continued to shape his calling. He pursued theological studies and became a pastor, a role he continues to serve in today. Years later, his church denomination launched a university, creating an unexpected opportunity for him to return to his original dream of becoming a doctor. Already a husband and father of five, Dr. Gilbert enrolled in medical school, served at Kibuye Hope Hospital, and eventually became its Director and CEO, a position he has held since 2017.

Today, Dr. Gilbert leads Kibuye Hope Hospital alongside a committed team of Burundian and regional African physicians, surgeons, nurses, interns, and medical students. Each has chosen to live and serve in this remote setting, viewing healthcare as a profession, a calling, and a ministry. Their work is strengthened by long-term partnerships with foreign doctors who train, mentor, and expand local medical capacity through specialized education.

These Burundian doctors are the hands and feet of Jesus to the hurting nation around them.



COURAGE LEADERSHIP INNOVATION

Kibuye Hope Hospital has survived decades of internal and external challenges. Courageous Burundian leaders kept this hospital open and serving patients, even through extended periods of civil war.



With a strong emphasis on educating and training the next generation of medical leaders, Kibuye Hope Hospital operates a medical school, a surgical residency program, and continually invests in new skills and techniques to better serve the rural population of Burundi and nearby nations.

In a land that is replete with challenges, Kibuye Hope Hospital has created a model of self-sufficiency and self-reliance through innovation:

- 1. They have their own water source, storage, & onsite purification system.**
- 2. They have built their own modern high-throughput wastewater treatment facility.**
- 3. They have multiple redundant power systems for consistent energy.**
- 4. They have their own multi-grain cereal production plant, supporting daily meals for patients and family members.**

**This program has been recognized by UNICEF and many other international agencies.*

What this team has accomplished in such a remote and demanding environment is truly impressive, but **THE VISION CONTINUES.**



EXPANDING HOPE



Working department by department, the leaders on the ground have been rethinking the patient experience and capacity issues. Now, we have the privilege of helping reframe and rebuild the first step in the patient care process. We are partnering with Kibuye Hope to build a completely new patient intake, triage, and outpatient facility.

Proper intake and triage procedures help to maximize the number of patients seen daily, creating structure for each visit and ensuring a good start to every patient visit. New triage and outpatient spaces will allow them to accommodate more people (some of them travel long distances) and dedicate more time to each patient.

All this, while actively and intentionally demonstrating the love and JOY of Christ to all who enter the doors.



“Intelligence and capability are not enough. There must be the joy of doing something.”

DR. V



DEMOLISH OLD BUILDINGS

FALL 2026

POUR FOUNDATION/BUILD STRUCTURE

WINTER 2026

INTERNAL FINISHINGS

SPRING 2027

EQUIP THE CLINIC

SUMMER 2027

GRAND OPENING

FALL 2027

*Total Project Costs: \$***250,667**

PROJECT FAQ'S

What is the Kibuye Hope Triage and Outpatient Project?

A brand-new triage and outpatient project (within a larger master plan) to help expand the quality and capacity of the care that they provide to 100's of rural Burundians each day. This is a key piece in the puzzle to re-create the way patients intentionally move through the care process.

What is Healthbridge Global's role in this project?

We are partnering with them to complete and deploy this much-needed center. We are advocating, consulting, networking, and helping fund this project to completion.

Does Healthbridge provide operating support for this project?

Generally, no. Rather than providing operating funds in perpetuity, we partner on projects and with partners that have the capacity to cover their operating expenses moving forward.

Other questions?

Feel free to reach out. We'll answer any questions you may have.

info@healthbridgeglobal.org

THE BEAUTY OF
HEALTHCARE

*The Hope of
the Gospel*

[Give Today >](#)

GIVE ONLINE

www.healthbridgeglobal.org

GIVE VIA CHECK

PO BOX 5294 | Auburn, CA 95604

Contact us to make SMART GIVING
financial gifts through stock, retirement
accounts, or other unique assets.

530.718.2277

 facebook.com/healthbridgeglobal

 @healthbridgeglobal



Healthbridge
GLOBAL